

# Belmont Middle & High School Project Update

December 2022

# Work Performed – December 2022

## Phase 1

- Continued commissioning and balancing
- Continued general work-to-complete list
- Installed MDF Wall in Field House

## Phase 2 Site Work and Utilities

- Started PH2 Site Lighting
- Continued installing sidewalks
- Continued foundations of dugouts
- Continued raising grade via existing material
- Continued final grading athletic fields
- Continued installing drainage at athletic fields

## Phase 2 Exterior

- Area F
  - Completed installation of curtain wall glass
  - Completed installation of masonry

## Phase 2 Interiors

- Area D
  - Continued installation of pipe and duct insulation
  - Completed framing ACT ceilings on Levels 2, 3 & 4
  - Started installation of light fixtures on all floors
  - Started framing ACT ceilings on Level 1
  - Continued installation of wall tile
  - Continued installation of PH2 elevator
  - Continued installation of casework on all floors
  - Completed installation of linoleum flooring on Levels 2, 3, 4
  - Started installation of plinth at Stair 4
  - Started installation of PLAM windowsills
- Area F
  - Completed MEP rough-in on all levels
  - Continued installation of pipe and duct insulation
  - Completed installation of drywall
  - Continued installation of wall tile
  - Continued painting on all levels
  - Started framing ACT ceilings on Levels 2 & 3
  - Started installation of light fixtures on Levels 2 & 3
  - Started installation of casework on Levels 2 & 3
  - Started installation of linoleum flooring on Levels 2 & 3

# Look Ahead – January 2023

## **Phase 1**

- Continue commissioning and balancing
- Continue general work to complete list

## **Phase 2 Site Work and Utilities**

- Continue raising grade via existing material
- Continue final grading athletic fields
- Continue installing drainage for athletic fields
- Continue installation of sidewalks
- Continue installing foundations for dugouts

## **Phase 2 Exterior**

- Area F
  - Complete installation of masonry
  - Start-up HRU's 5 & 6

## **Phase 2 Interiors**

- Complete installation of electrical distribution and turn on permanent power

### ○ Area D

- Start flooding ACT ceilings
- Continue installing wall tile
- Continue installation of PH2 elevator
- Continue installation of casework
- Continue installation of linoleum flooring
- Continue installation of plinth at Stair 4
- Continue installation of PLAM windowsills

### ○ Area F

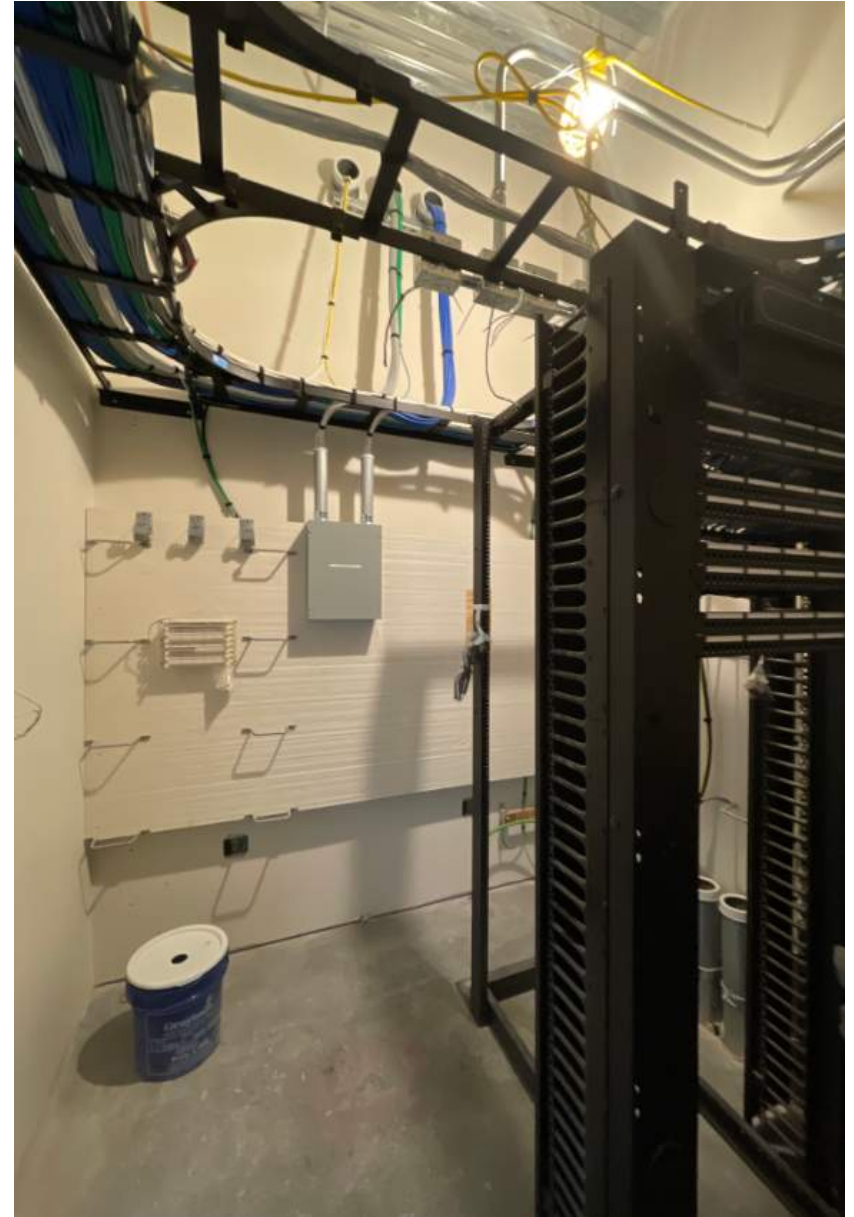
- Complete rough-in of MEPFP's on all levels
- Continue installation of pipe and duct insulation
- Continue installing and finishing drywall
- Continue installing wall tile
- Continue painting
- Continue framing ACT ceilings
- Continue installation of casework
- Continue installation of linoleum flooring

# Progress Photos

Media Center



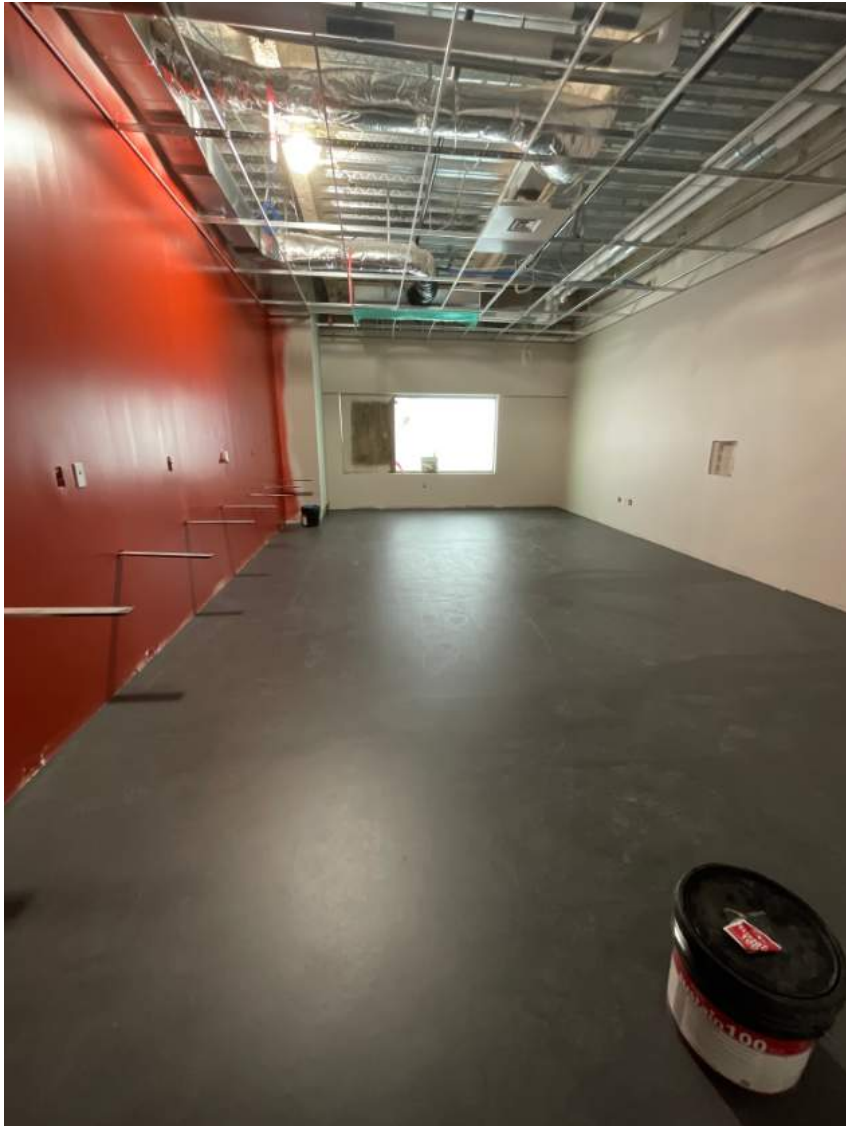
IDF Closet



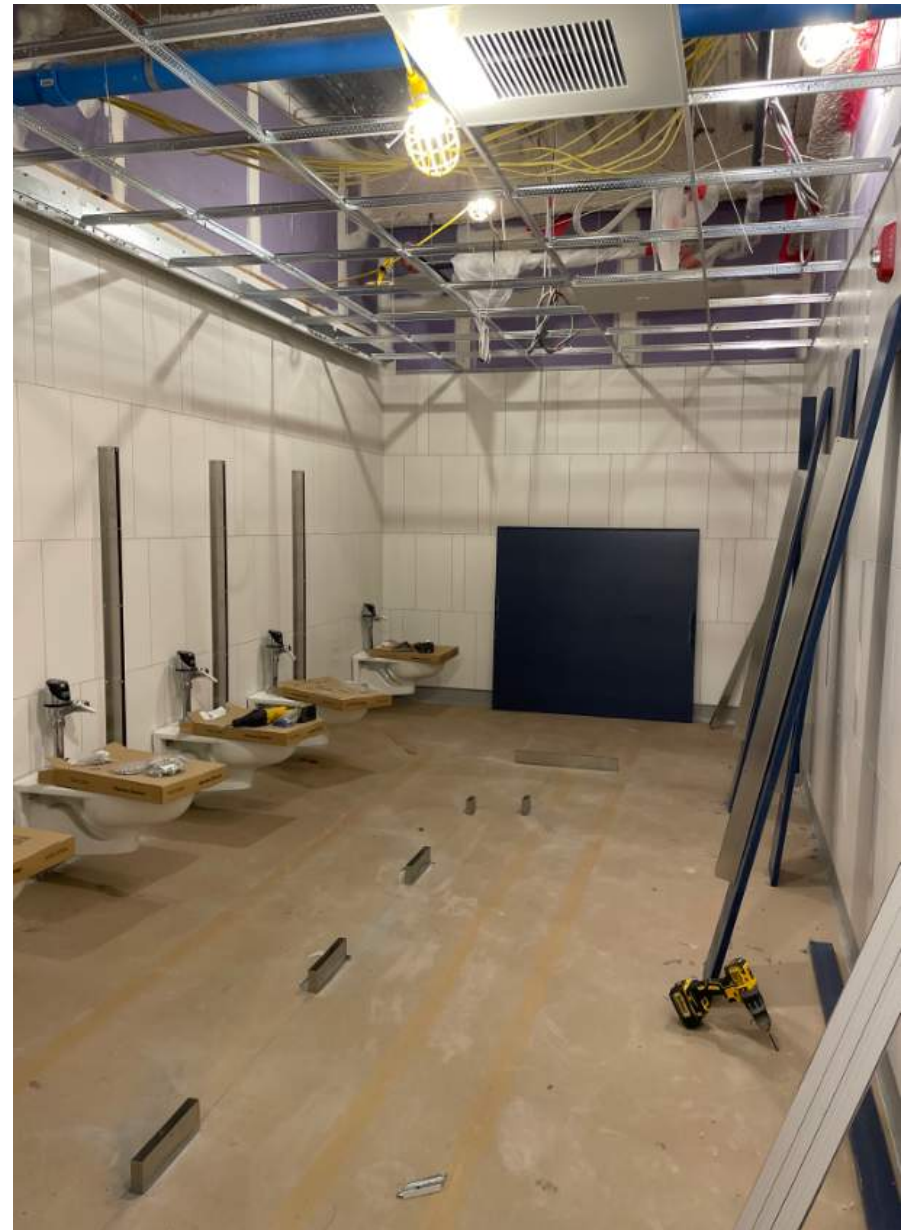


# Progress Photos

Teacher's Planning



Typical Bathroom



# Progress Photos

Sitework





# Progress Photos

Baffle Ceiling Grid





# Progress Photos

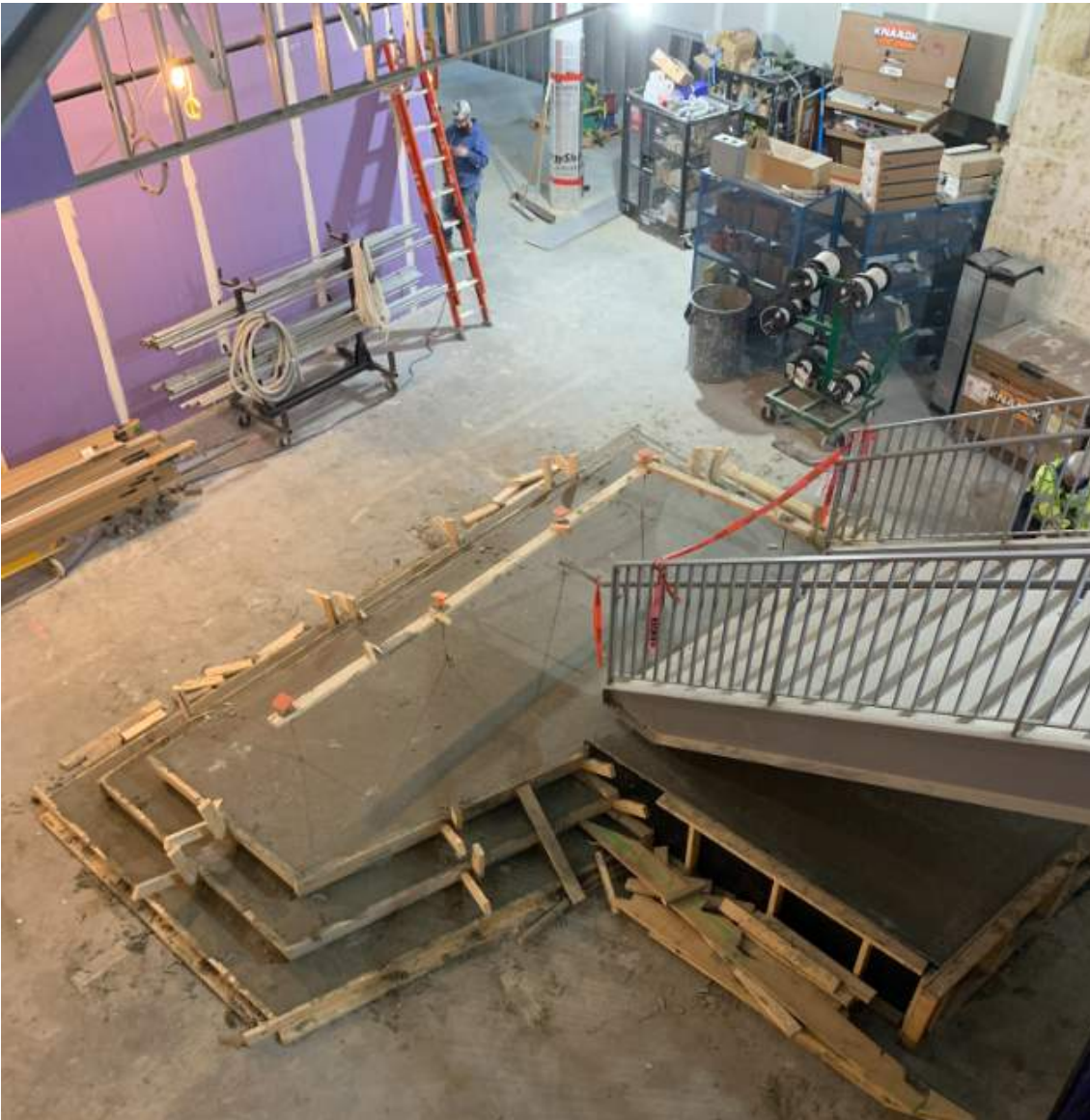
Sidewalk Pour





# Progress Photos

Stair 4 Plinth



MDF Wall in Field House

