

# Belmont Middle & High School Project Update

October 2022

# Work Performed – October 2022

## **Phase 1**

- Continued commissioning and balancing
- Continued general work-to-complete list

## **Phase 2 Site Work and Utilities**

- Completed removing existing pavement from old High School parking lot after construction trailers were moved
- Continued raising grade via existing material
- Continued final grading athletic fields
- Started installing drainage at athletic fields
- Started installing curbing

## **Phase 2 Exterior**

- Area F
  - Continued installation of curtain wall glass
  - Continued installation of masonry

## **Phase 2 Interiors**

- Area D
  - Completed rough-in of MEPFP's on Level 1
  - Continued installation of pipe and duct insulation
  - Completed installation and finishing of drywall
  - Continued painting on Levels 2, 3 & 4
  - Continued framing ACT ceilings on Level 2
  - Continued intumescent fireproofing
  - Continued installation of wall tile
  - Started installation of overhead fire doors
  - Started installation of PH2 elevator
- Area F
  - Completed installation of interior partition framing
  - Completed installation of hollow metal frames
  - Continued rough-in of MEPFP's on all levels
  - Continued installation of pipe and duct insulation
  - Started installation and finishing of drywall

# Look Ahead – November 2022

## **Phase 1**

- Continue commissioning and balancing
- Continue general work to complete list

## **Phase 2 Site Work and Utilities**

- Continue raising grade via existing material
- Complete final grading athletic fields
- Continue installing drainage for athletic fields

## **Phase 2 Exterior**

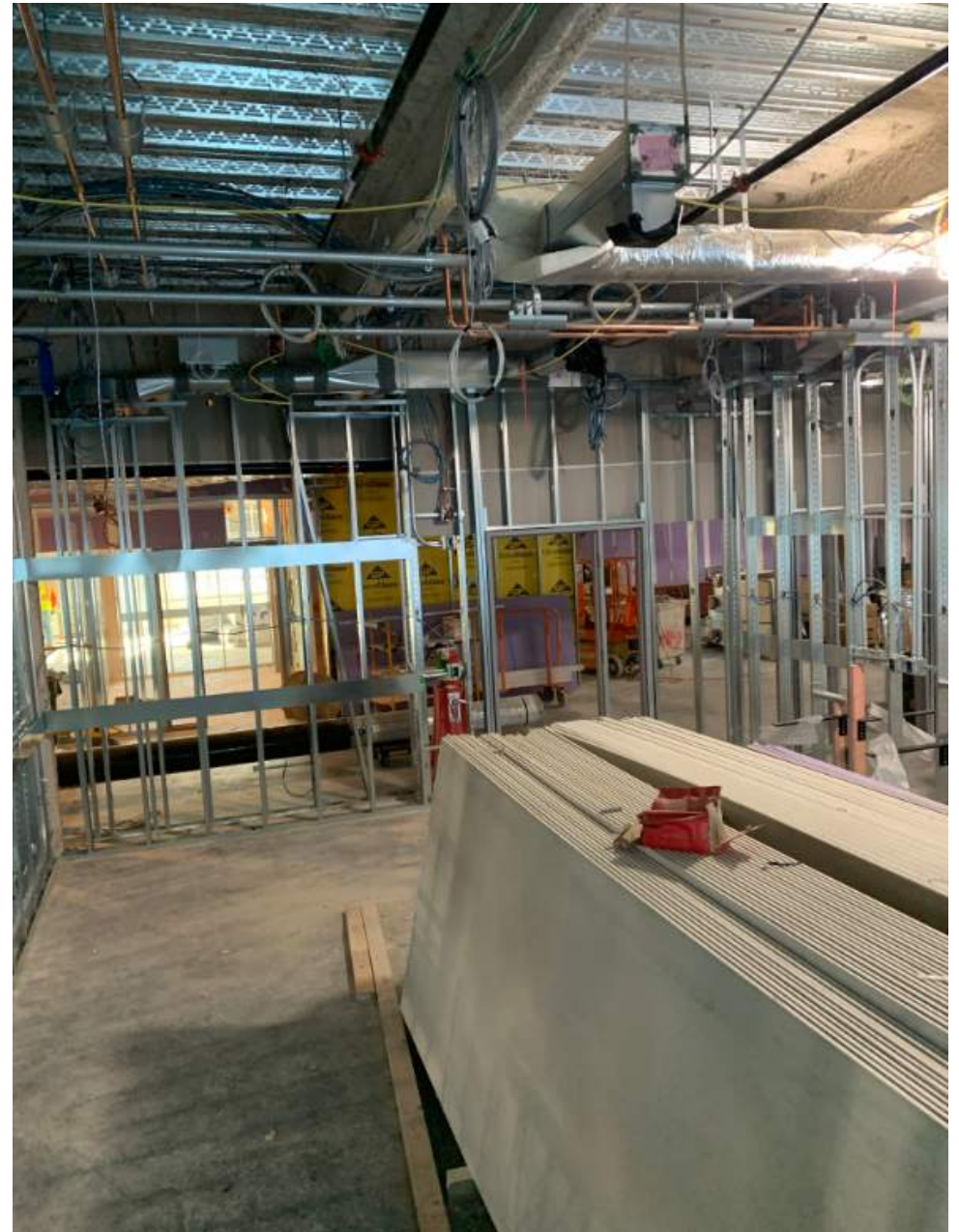
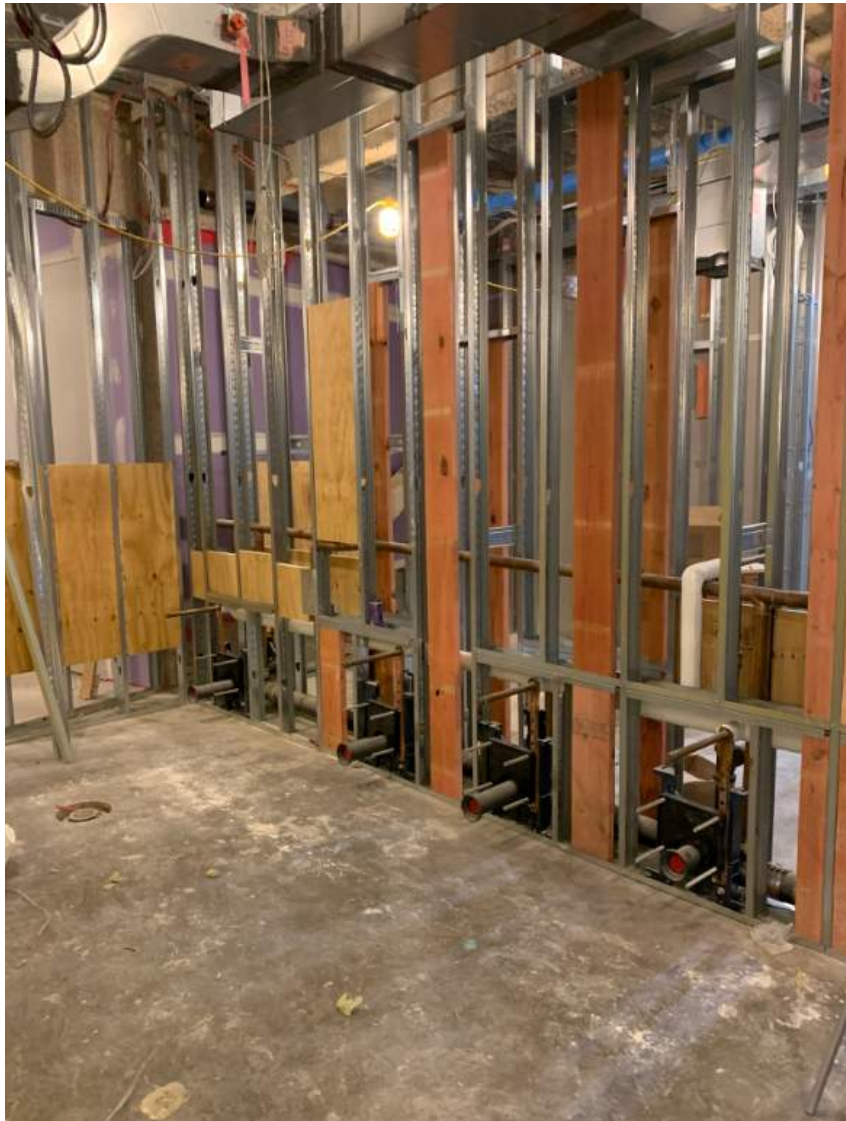
- Area F
  - Complete installation of curtain wall glass
  - Complete installation of masonry

## **Phase 2 Interiors**

- Area D
  - Continue painting on all levels
  - Continue framing ACT ceilings
  - Continue installing wall tile
  - Continue installation of overhead fire doors
  - Continue installation of PH2 elevator
  - Start installation of casework
- Area F
  - Complete rough-in of MEPFP's on all levels
  - Continue installation of pipe and duct insulation
  - Continue installing and finishing drywall
  - Start installing wall tile

# Progress Photos

- Interior Framing, Blocking, and MEPFP Rough-in





# Progress Photos

- Interior Paint and Overhead MEP Rough-in



- Installation of PH2 Elevator



# Progress Photos

– Finishing Drywall





# Progress Photos

- Installation of Overhead Fire Doors



# Progress Photos

- Installation of Drywall and Intumescent Paint on Structural Column





# Progress Photos

– Installation of Curbing



# Progress Photos

– Area F West Elevation Masonry





# Progress Photos

– Installation of ACT-14 Ceiling Grid

