

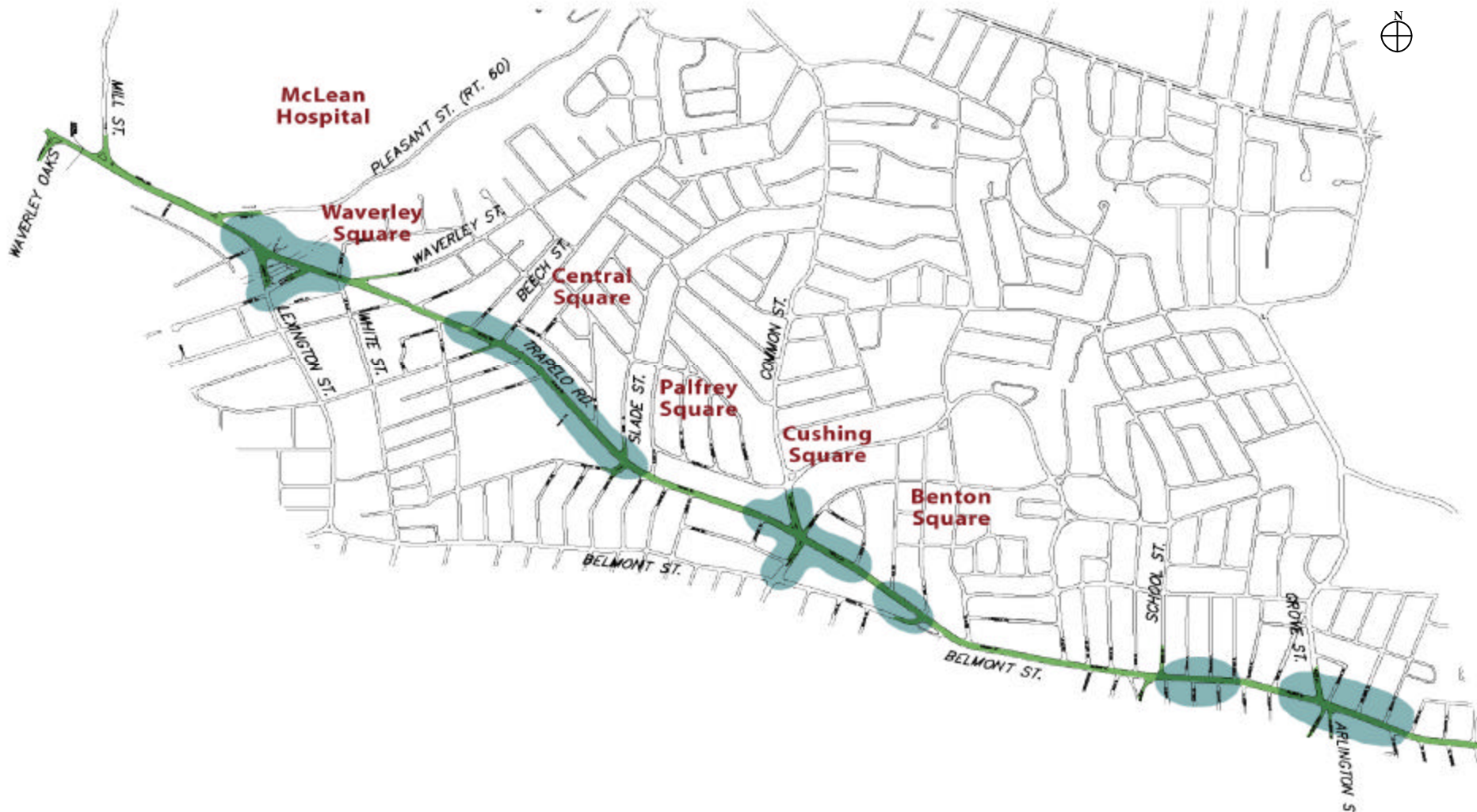
Trapelo Road/Belmont Street Corridor Improvements



Town of Belmont, Massachusetts



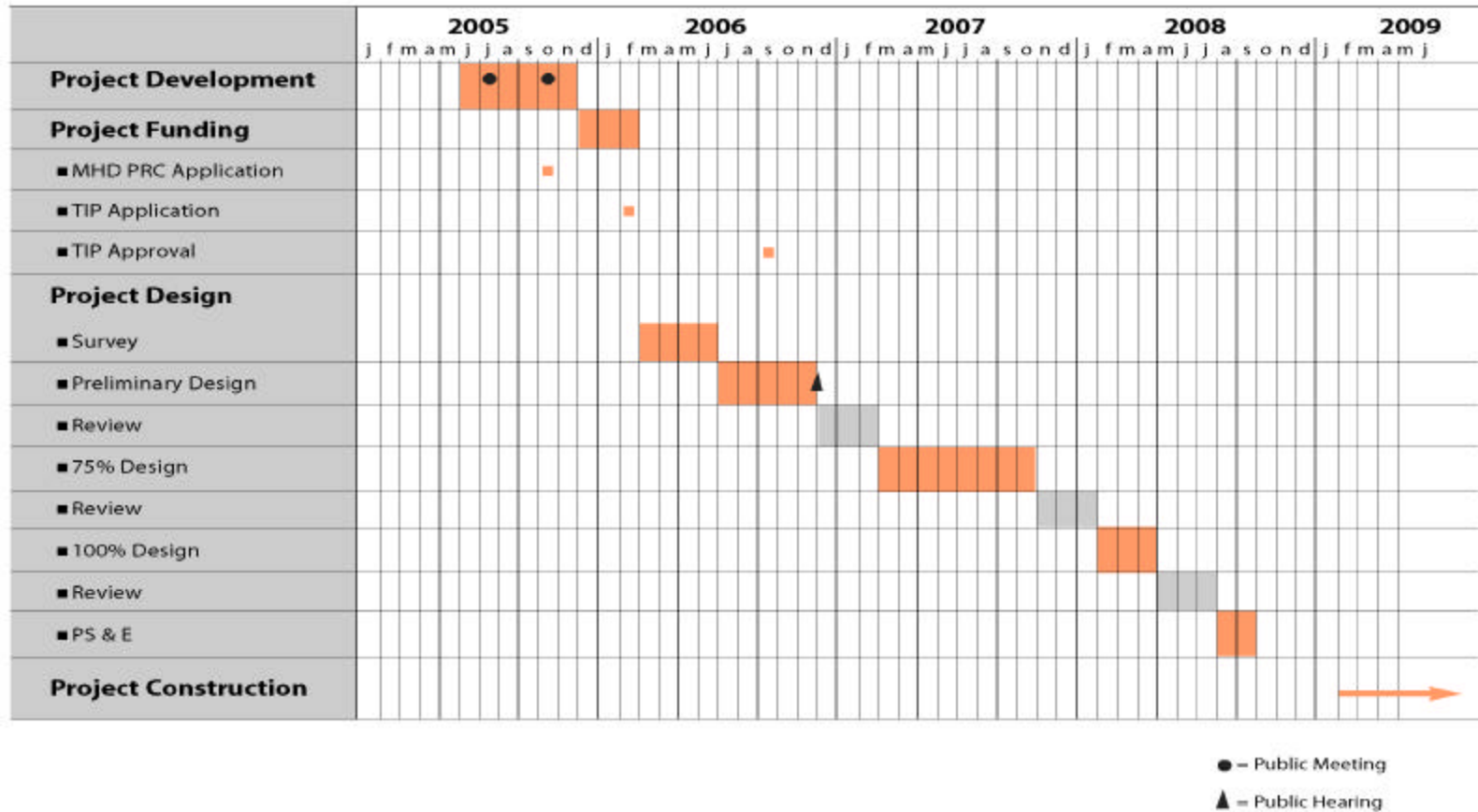
Project Area



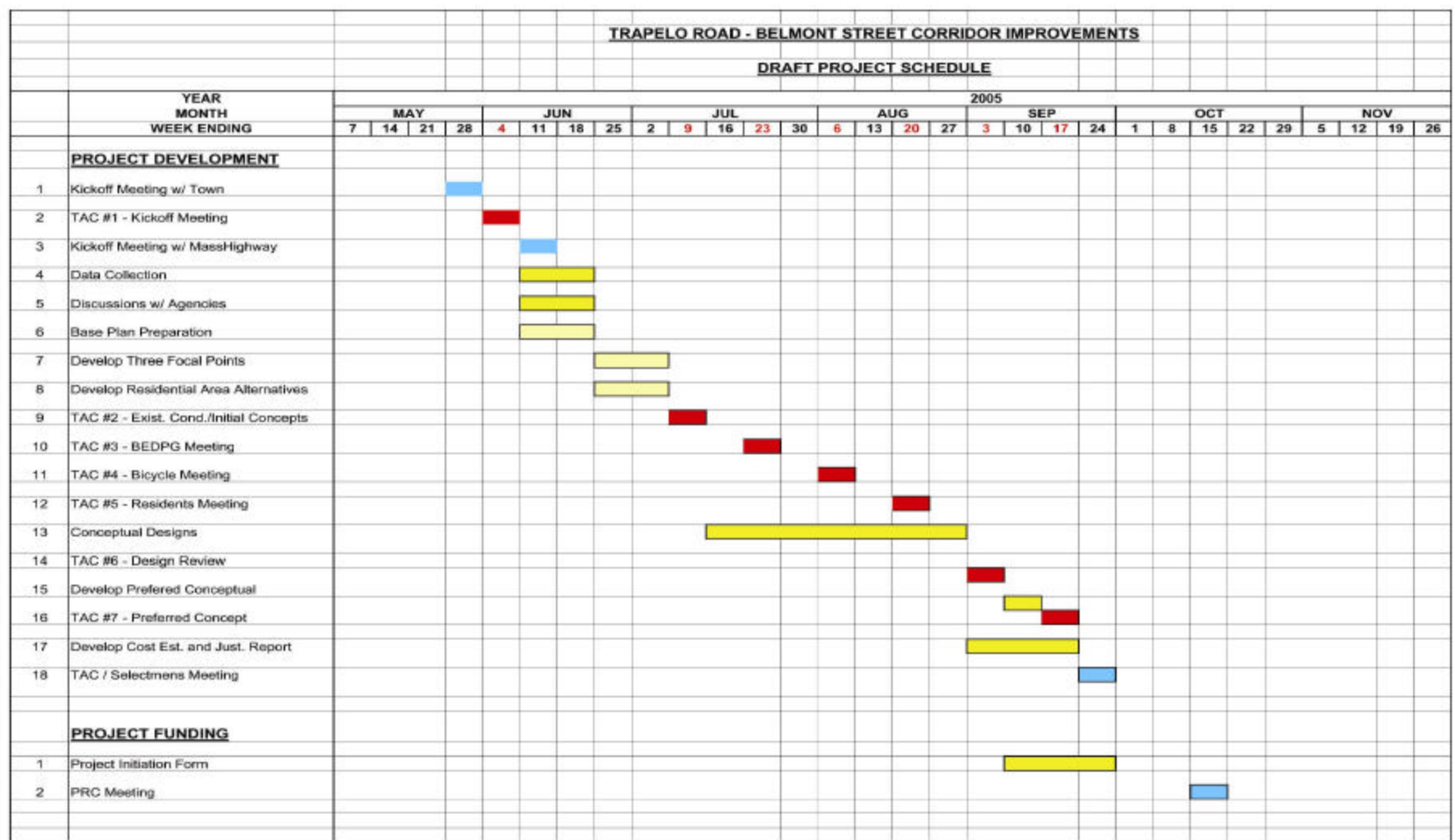
Trapelo Road/Belmont Street Improvements



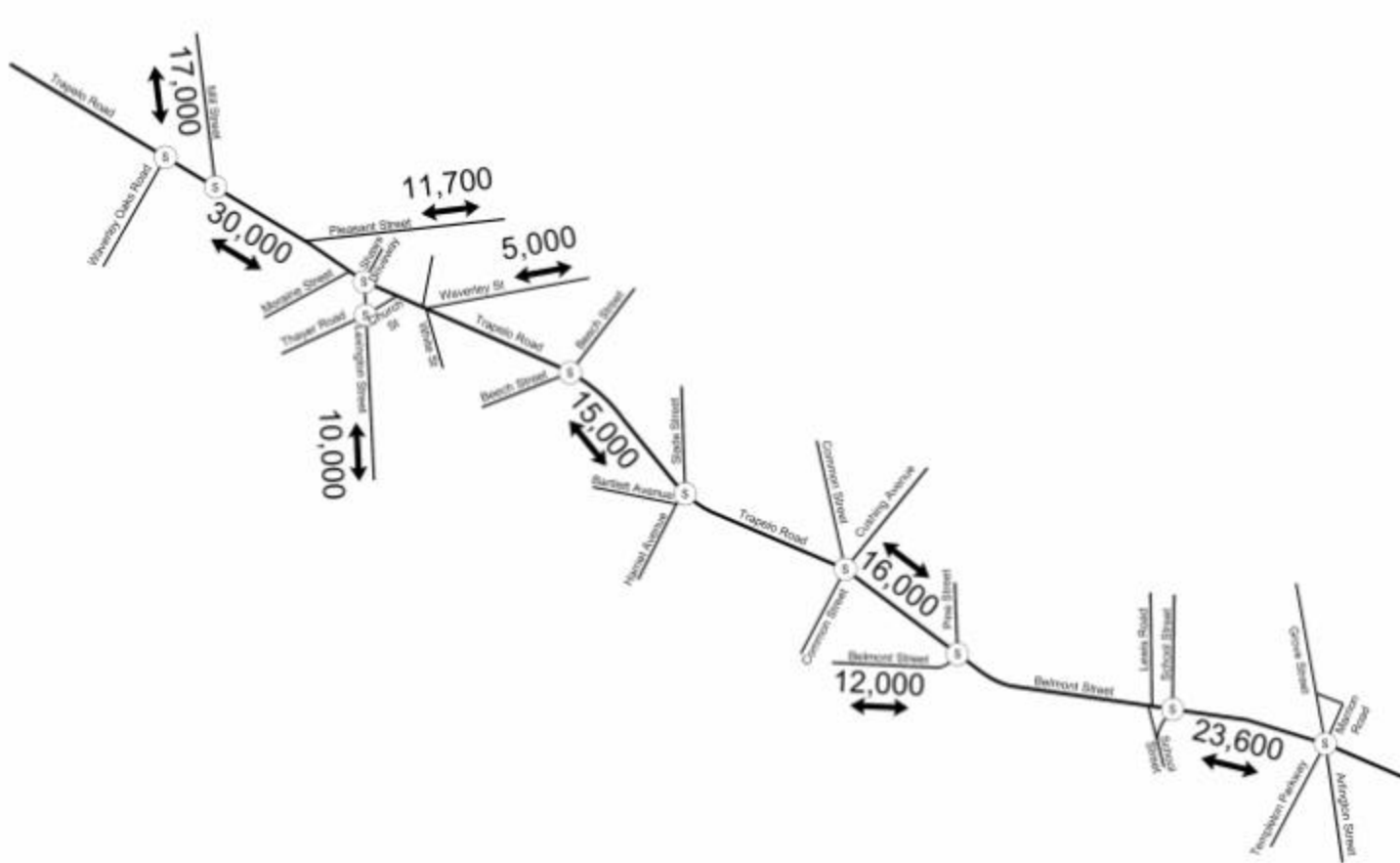
Project Schedule



Project Development Schedule

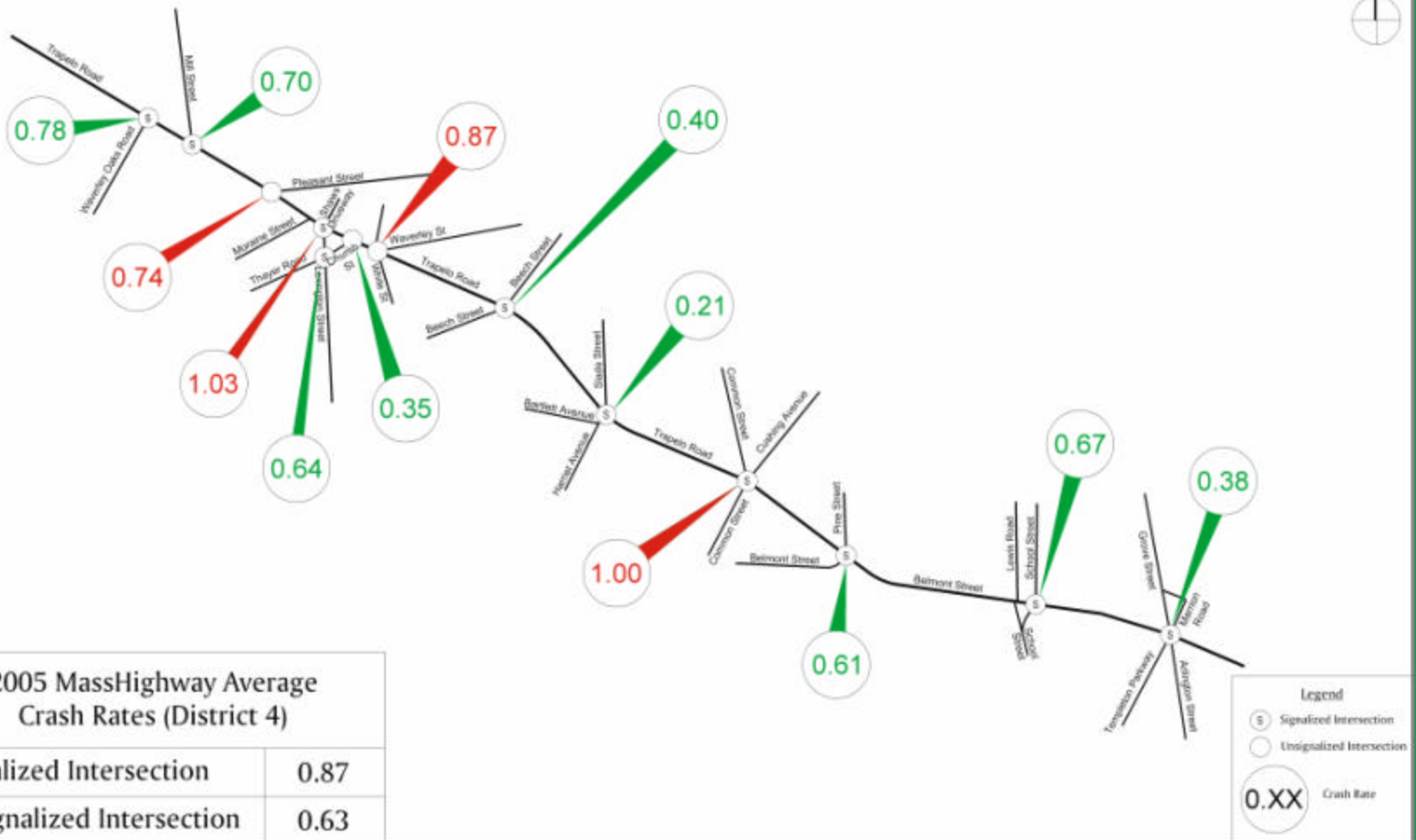


Daily Traffic Volumes

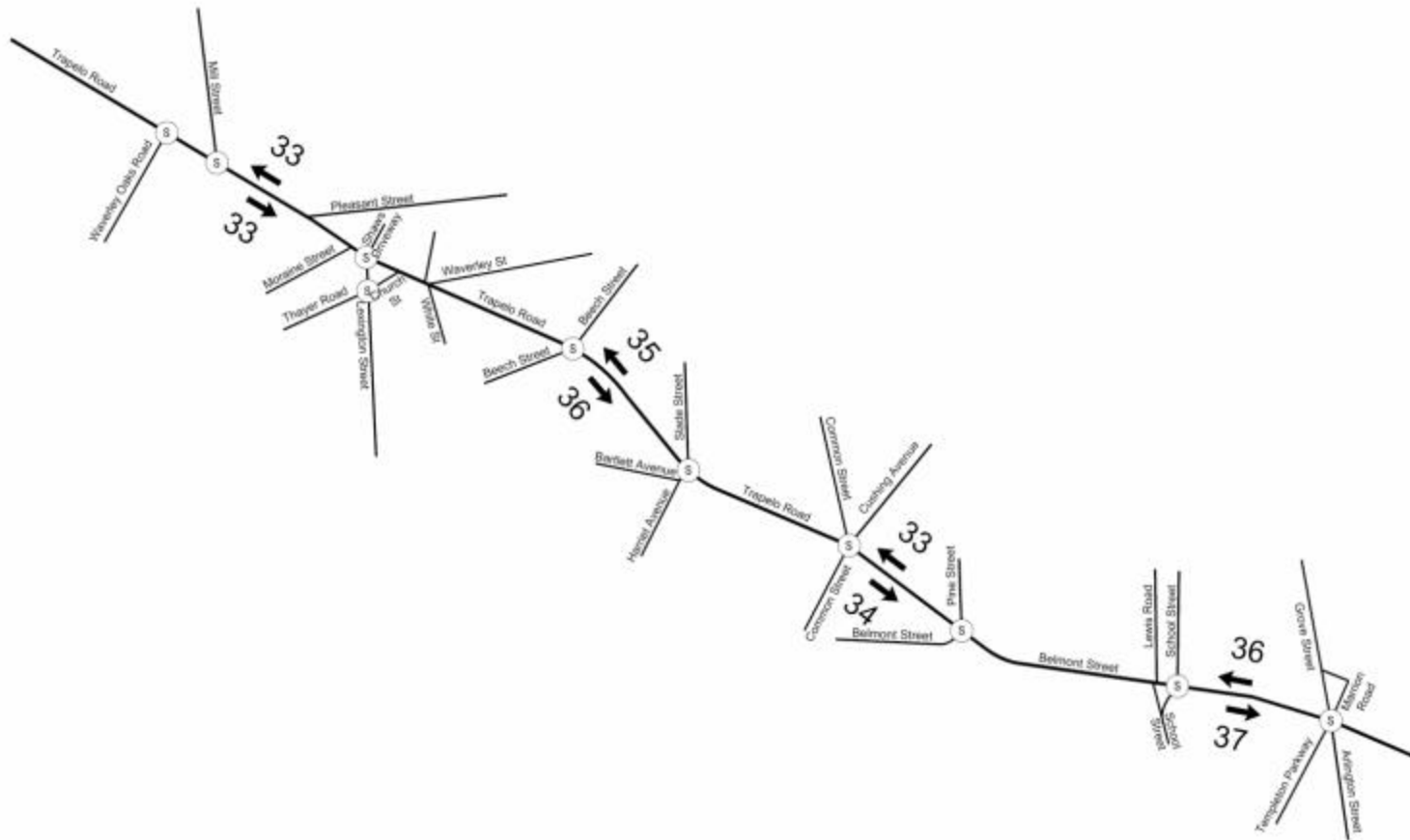


Trapelo Road/Belmont Street Improvements

Accident Analysis



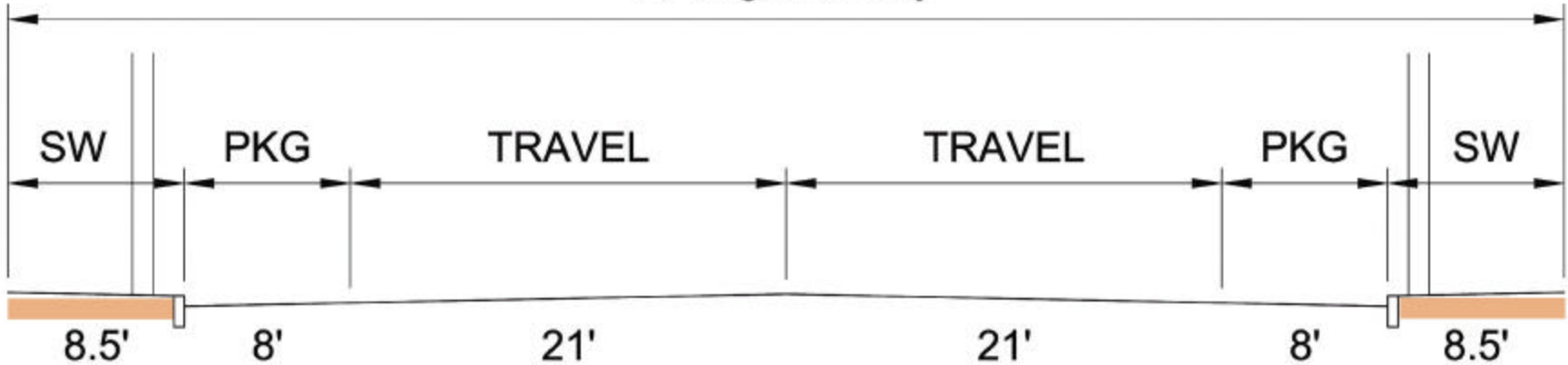
Speed Study



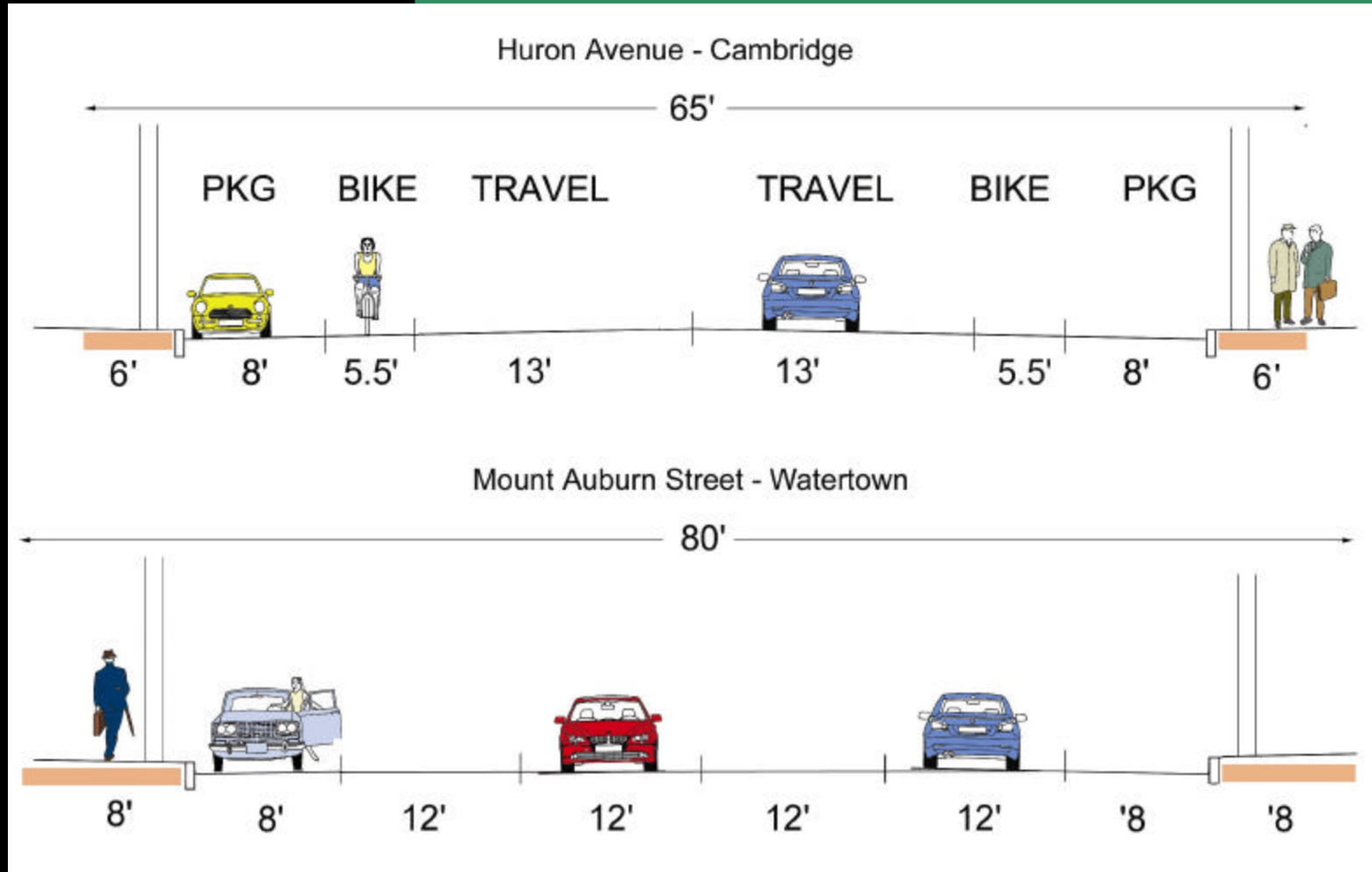
Trapelo Road/Belmont Street Improvements

Existing Roadway Cross Section

75' Right of Way



Other Roadways with Trackless Trolleys



Bicycle Design Considerations

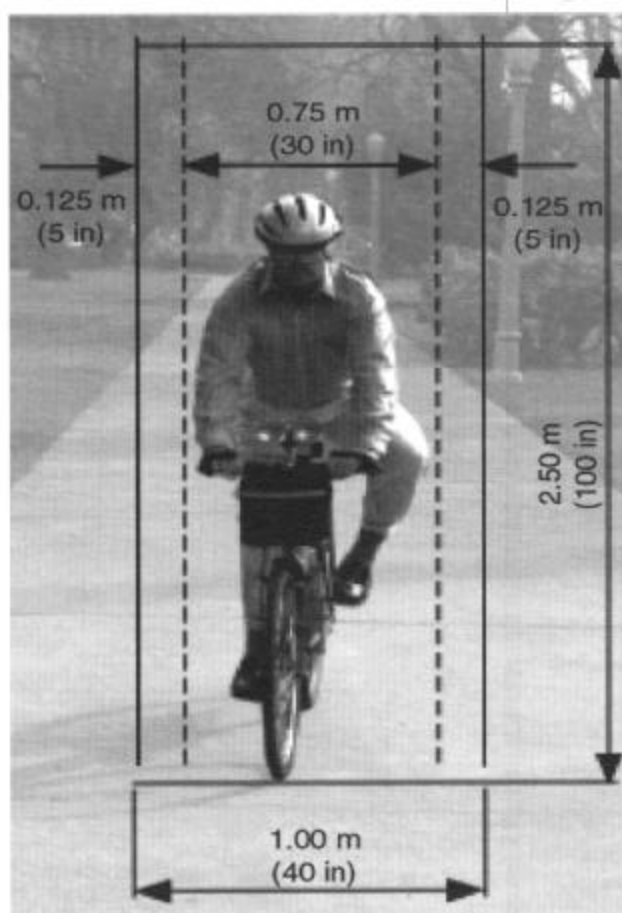
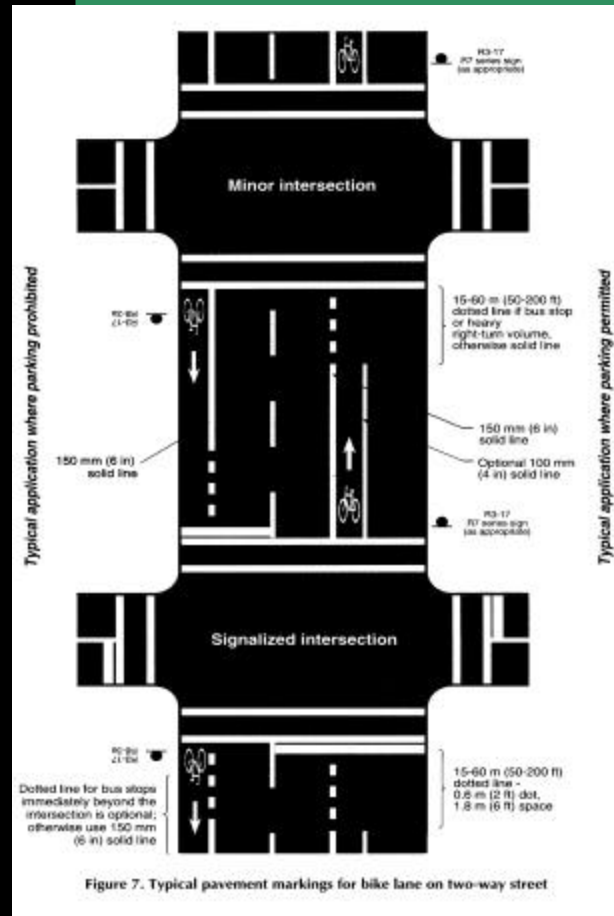
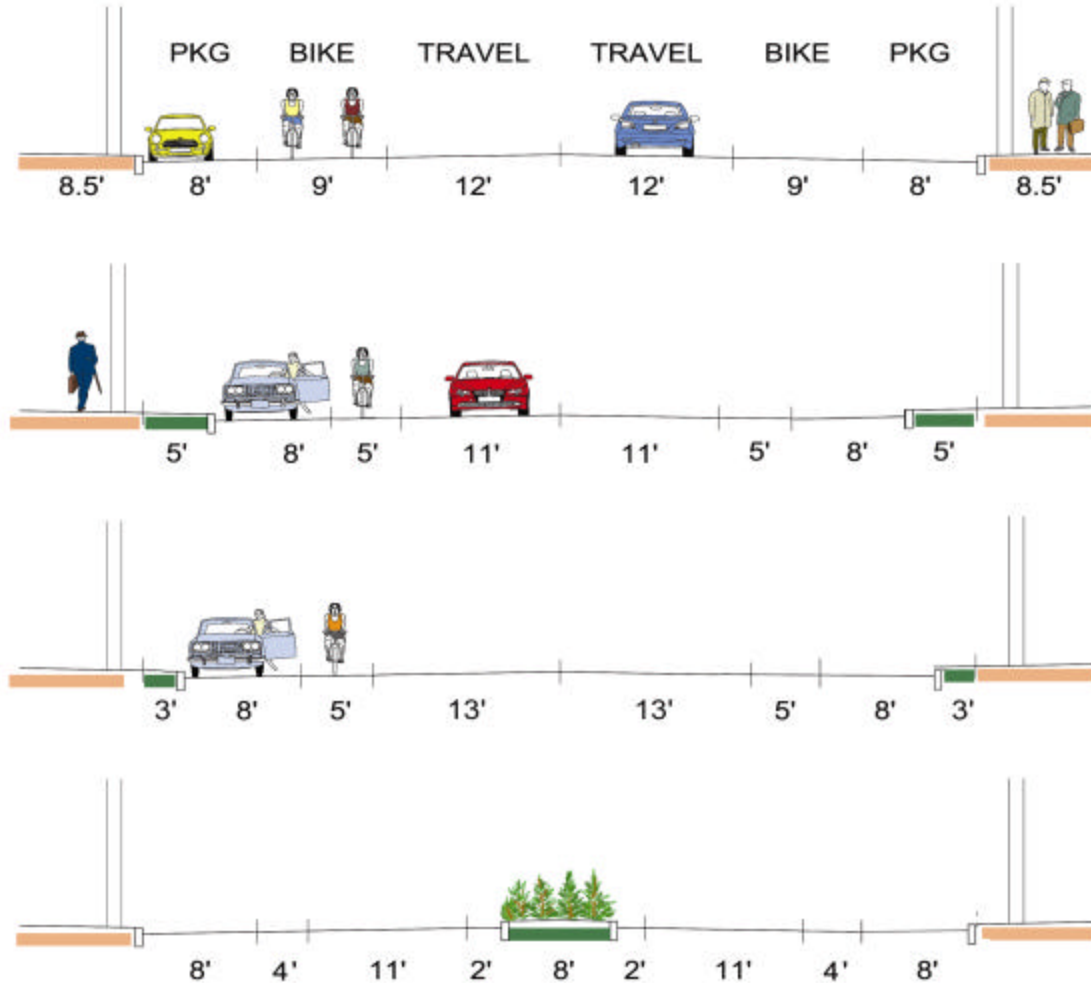


Figure 1. Bicyclist Operating Space

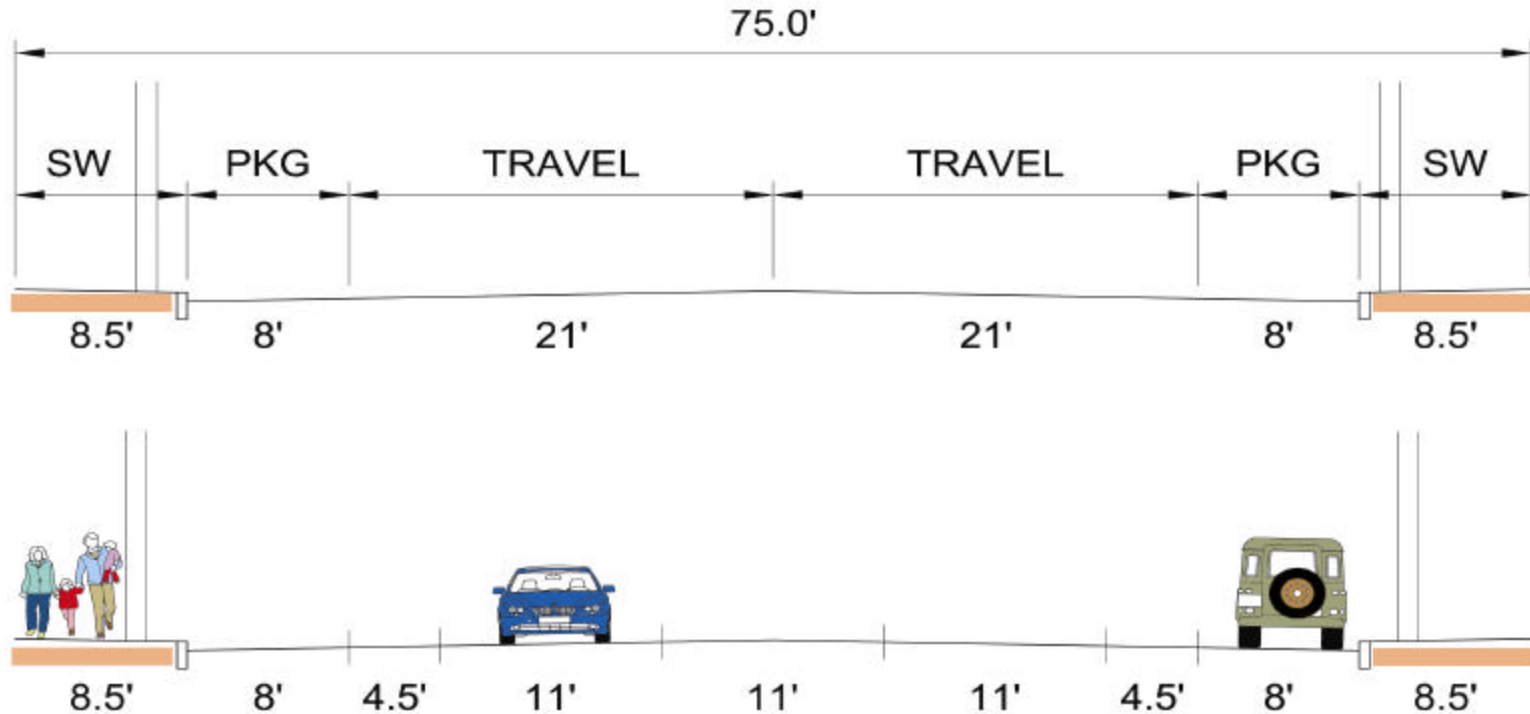
Bicycle Design Considerations



Two Lane Typical Sections



Three Lane Typical Sections



Four Lane Typical Sections

