

Town of Belmont
New Public Works Facility

Why Does the Town Need a New Public Works Facility

- All facilities no longer meet the space needs of the DPW divisions.
- Buildings do not meet today's standards for public works facilities
- Some of the existing facilities are more than 70 years old.
- DPW responsibilities, vehicles, and equipment have increased significantly over the years, but the facilities have not.
- Some of the Town vehicles and equipment are stored outdoors due to limited covered storage which reduces the life expectancy of the Town's equipment.



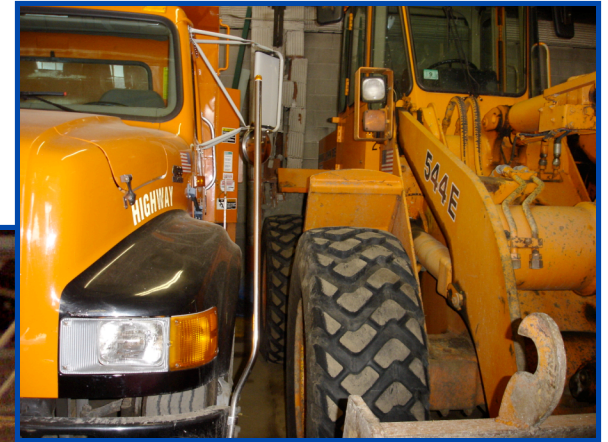
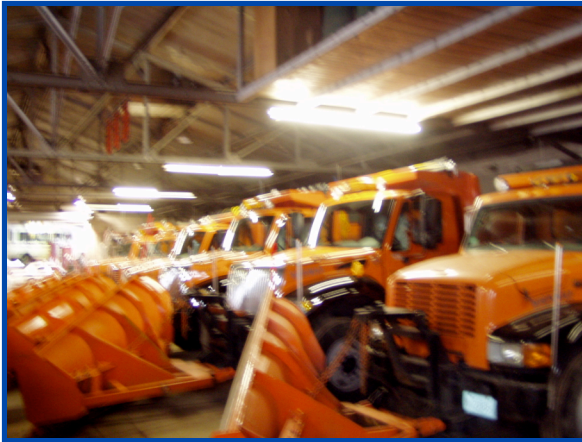
Town of Belmont
New Public Works Facility
Why Does the Town Need a New Public Works Facility

- Vehicle and Equipment types and sizes have changed significantly over the years



- Building code requirements and environmental regulations have changed substantially requiring changes to the existing buildings. The existing building do not conform to current codes.

Town of Belmont
New Public Works Facility
Existing Deficiencies



Inadequate interior vehicle storage

Town of Belmont
New Public Works Facility
Existing Deficiencies



Inadequate locker and lunch room for employees

Town of Belmont
New Public Works Facility
Existing Deficiencies



*Inadequate Central Fleet Maintenance shop space
to safely and efficiently maintain equipment*

Town of Belmont New Public Works Facility Existing Deficiencies

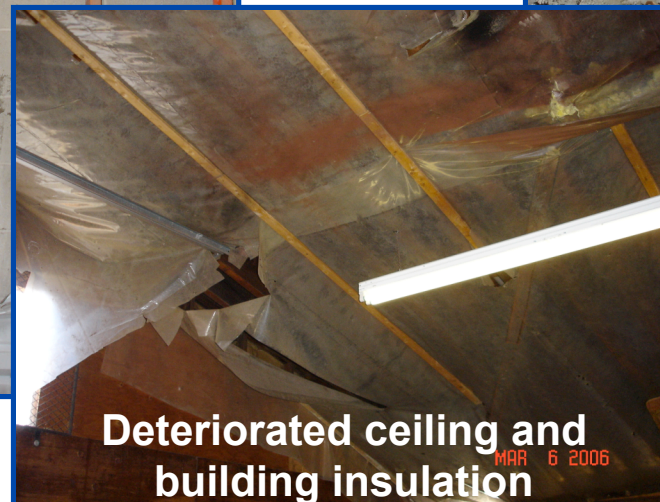


*Inadequate material
storage space*



*Non-ADA Compliant
Office & Toilet Area*

Town of Belmont
New Public Works Facility
Existing Conditions



Deteriorated Buildings