

Belmont Community Path: Potential Safe Routes to School (SRTS) Options



Community Path Advisory Committee (CPAC)

23 March 2014



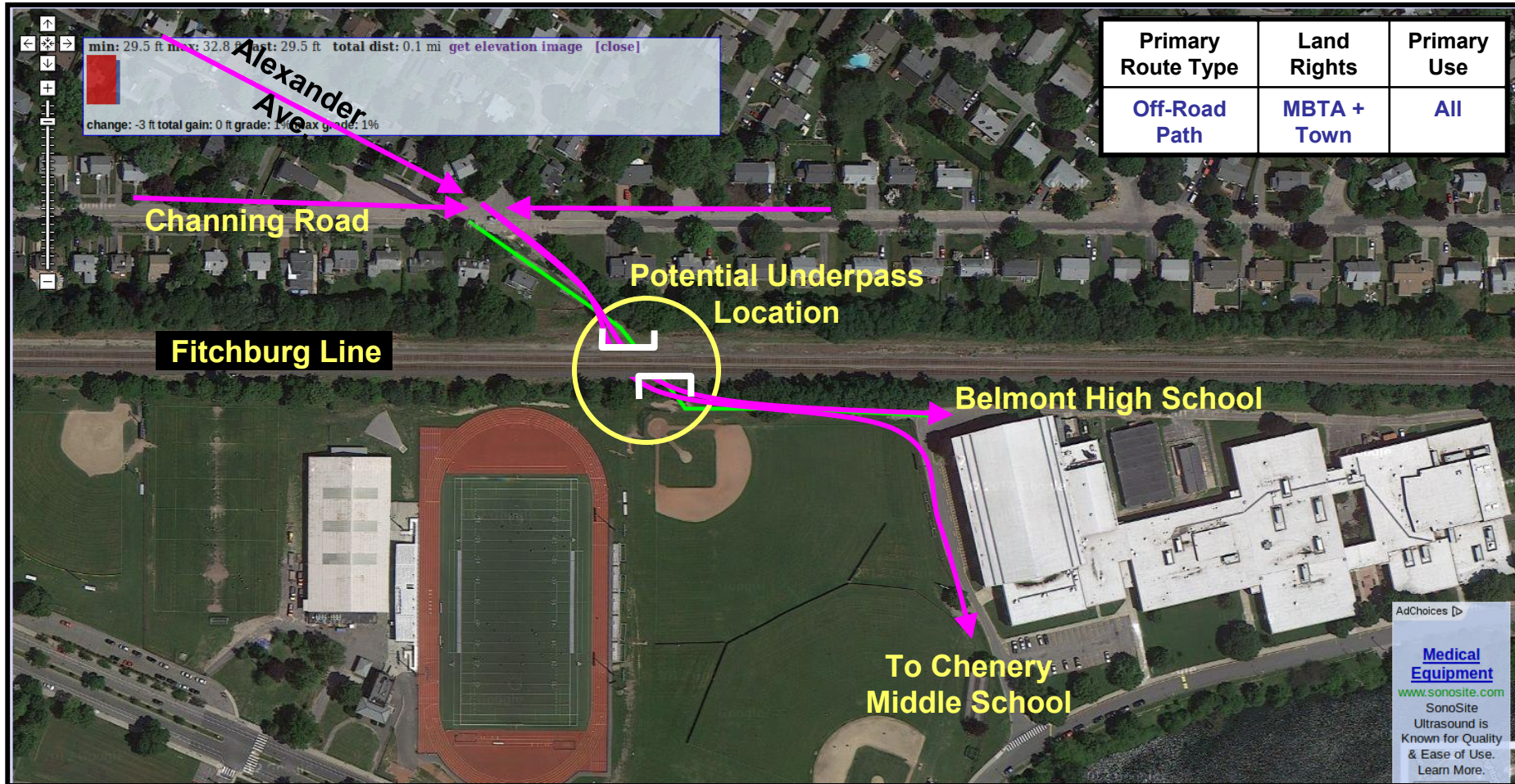
Safe Routes to School and the Community Path

- **The Belmont Community Path is envisioned to be a trail used for walking and biking through Town.**
- **A primary objective for Community Path is that it is safe for children, families and wide range of users.**
- **Some potential Belmont Community Path routes could enhance and/or expand Safe Routes to School (SRTS) options for the Town's schools.**
- **CPAC will be providing recommendations on route options, and is looking for feedback on these potential route concepts.**



Pedestrian and Bicycle Connection Between High School and Channing Road (Route 4-B)

Pedestrian accessway between Winn Brook neighborhood and Belmont High School via underpass of Fitchburg line. Also provides more direct access to Chenery.

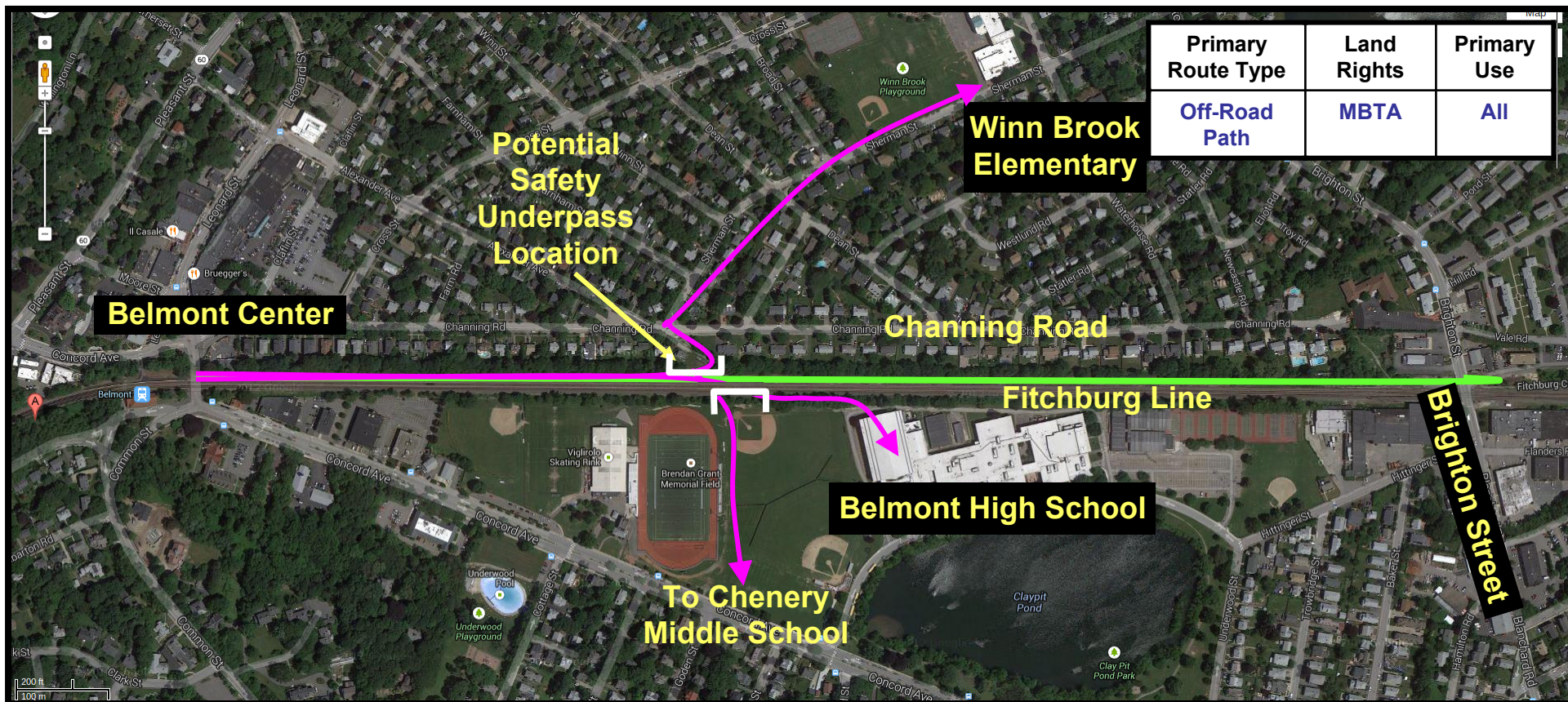


= Safe Route to School Route

= Potential Community Path Route



Route to Winn Brook Elementary and High School via Potential MCRR Off-Road Route Option (Route 4-CD)



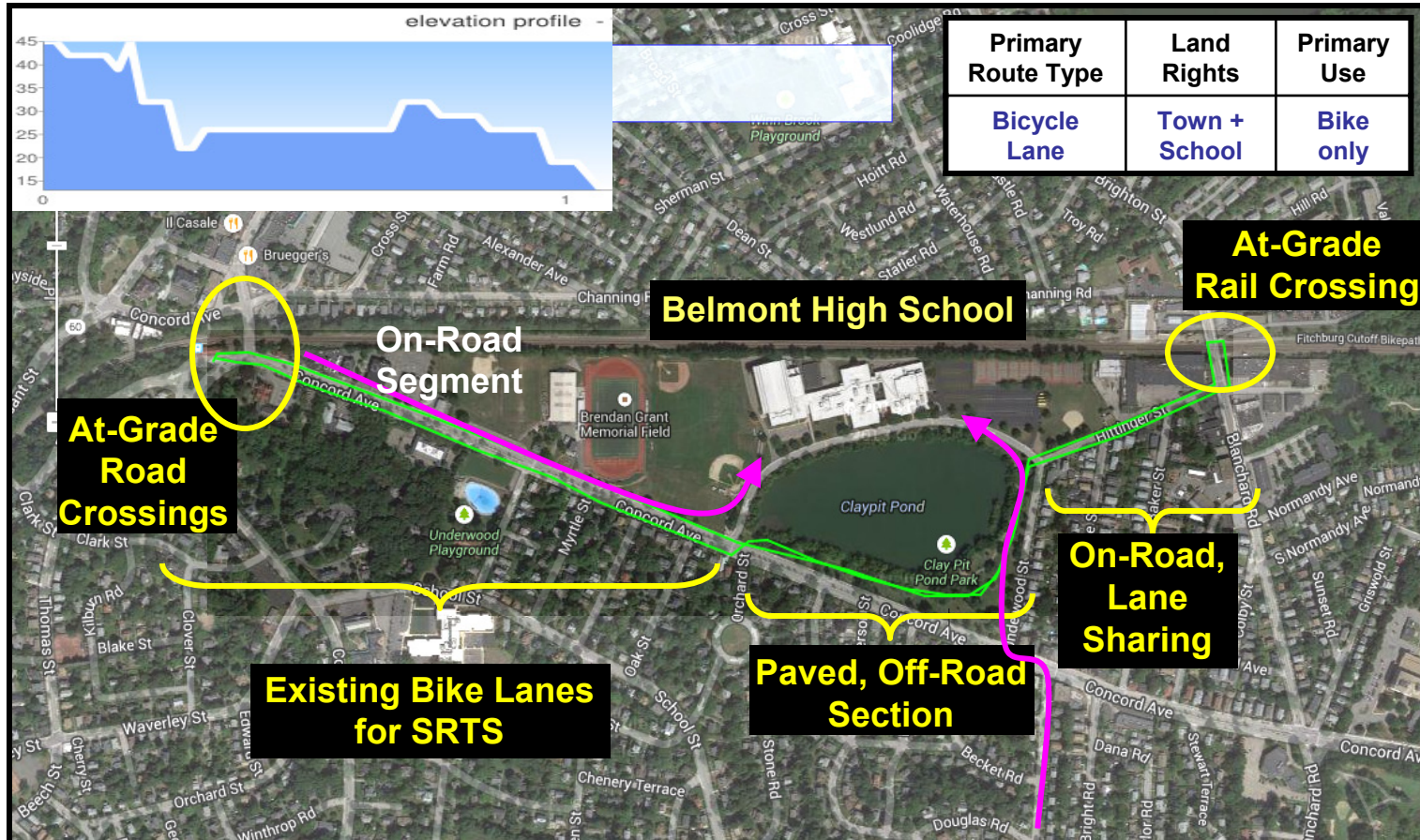
Primary Route Type	Land Rights	Primary Use
Off-Road Path	MBTA	All

➡ = Safe Route to School Route

— = Potential Community Path Route



Route to High School via Concord Avenue (Route 4-FI')



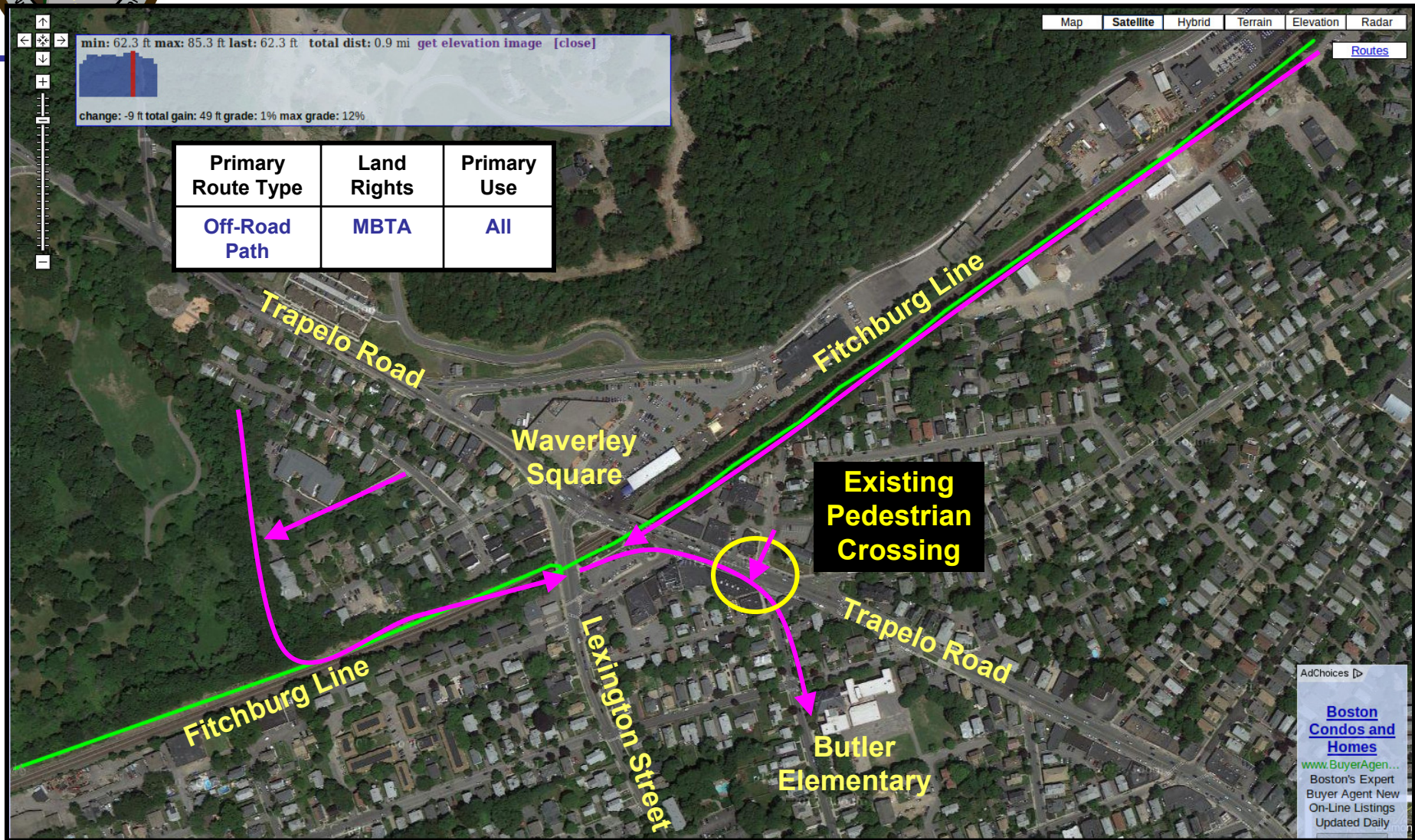
- CPAC discussed cycle tracks to replace bicycle lanes on Concord Ave.
- More analysis needed to determine how to implement a safe user design

➡ = Safe Route to School Route

— = Potential Community Path Route



Route to Butler Elementary (Route 1-E)



— = Safe Route to School Route

— = Potential Community Path Route



Summary

- **Four potential Community Path routes/access points that would offer Safe Routes to School (SRTS) options for Belmont students.**
- **Schools expected to benefit would include:**
 - **Belmont High School**
 - **Winn Brook Elementary**
 - **Butler Elementary**
 - **Chenery Middle School**
- **Other schools also indirectly improved if growth in SRTS programs encourages more walking and biking to school.**
- **Like High School, Chenery Middle School also Town-wide school, so expect Community Path would offer short SRTS segments to Chenery (e.g., railroad underpass near High School).**